

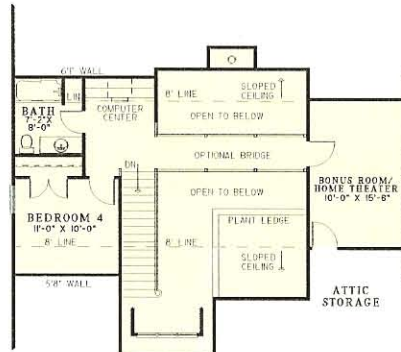
NDG 1090



Stone and cedar create a unique exterior featured on this Nelson Design Group home. The Great Room and Dining Room merge with columns in between, and are just steps away from the convenient Kitchen. This plan design offers the best for everyone - privacy for all family members as well as ample space. Upstairs, find another Bedroom, Bathroom, and a built-in Computer Center, as well as the option of a Bonus Room/Home Theater to enjoy with your family for years to come.

Floor Plan Specifications

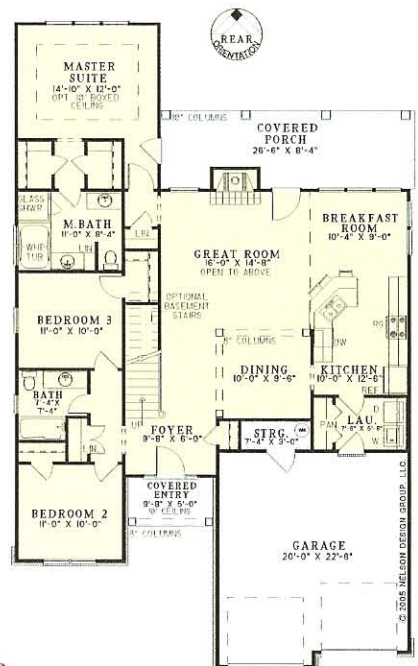
Width: 42' 0"
 Depth: 68' 6"
 Main Floor: 1,588 sq. ft.
 Upper Floor: 287 sq. ft.
 Total Living: 1,875 sq. ft.*
 *Bonus: 233 sq. ft.
 Main Ceiling: 9 ft.
 Upper Ceiling: 8 ft.



Upper Floor

- 8 in. columns on Covered Entry
- Foyer open to above
- 8 in. boxed columns surround Dining Room
- Great Room with fireplace and access to rear Covered Porch opens to Upper Floor
- Rear Covered Porch with 10 in. boxed columns
- Kitchen opens to Breakfast Room with snack bar
- Master Suite with optional 10 ft. boxed ceiling and two walk-in closets
- Master Bath with whirlpool tub, glass shower, and split vanities
- Computer Center
- Optional Bridge and Bonus Room/Home Theater

Main Floor



Amber-Di' Lane Homes, Inc.
 903-887-4228

Designed by
Nelson Design Group, LLC
 RESIDENTIAL PLANNERS - DESIGNERS
 ©Nelson Design Group, LLC
 www.nelsondesigngroup.com
 800.590.2423

Note: Rendering is artist's interpretation of this home and does not necessarily represent floor plans. Please refer to actual floor plans for more details.