

NDG 1133



Each time I see a home built of stone, I think of castles. And like most young girls I longed to live in a castle on a hill. This design reminds me of the summer I met an Italian boy named Antonio who lived with his family in an Italian country home they called *La Rocca* – “the fortress”. The same colors of stone are reflected in this design....bringing back wonderful youthful memories.

Floor Plan Specifications

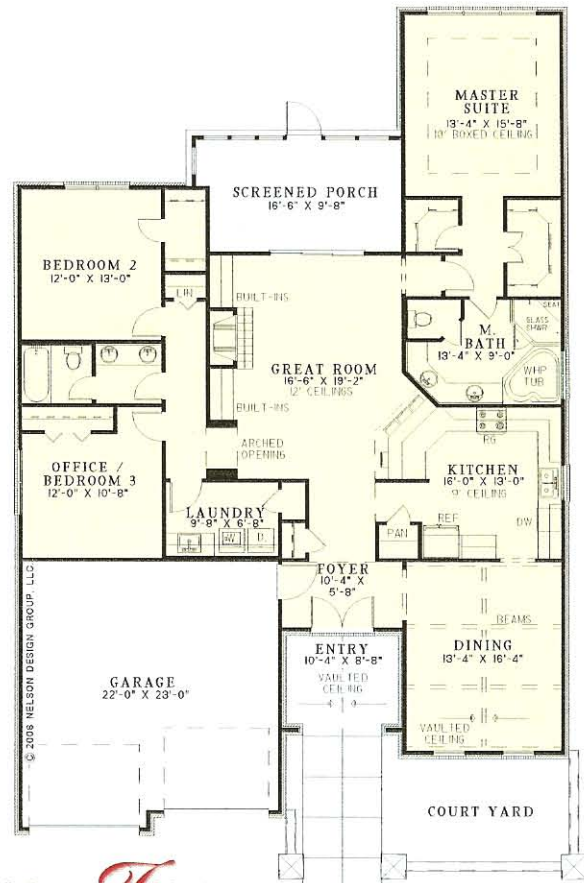
Width: 47' 0"

Depth: 75' 0"

Total Living: 1,943 sq. ft.

Main Ceiling: 9 ft.

- Court Yard
- Covered Entry with vaulted ceiling
- Dining Room with vaulted ceiling and exposed beams
- Kitchen with 9 ft. ceiling and snack bar to Great Room
- Great Room with 12 ft. ceilings, fireplace, built-ins, and access to Screened Porch
- Master Suite with 10 ft. boxed ceiling and two walk-in closets
- Master Bath with corner whirlpool tub, glass shower and two vanities
- Bedroom 2 with walk-in closet
- Office/Bedroom 3
- Laundry with sink



Amber-Di' Lane Homes, Inc.
903-887-4228

Designed by
Nelson Design Group, LLC
RESIDENTIAL PLANNERS - DESIGNERS
©Nelson Design Group, LLC
www.nelsondesigngroup.com
800.590.2423