

NDG 1177

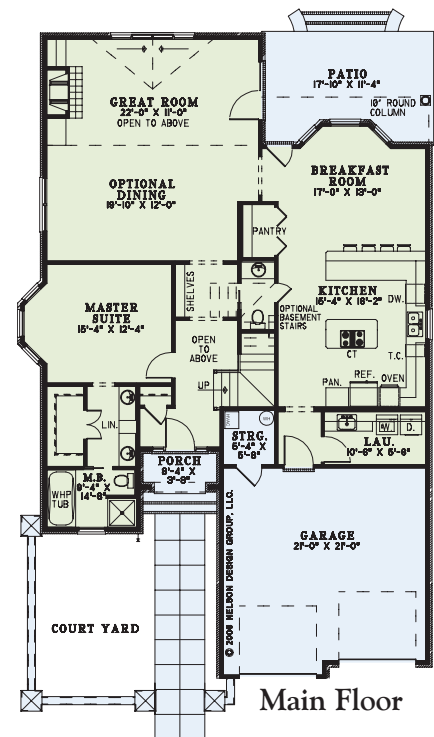
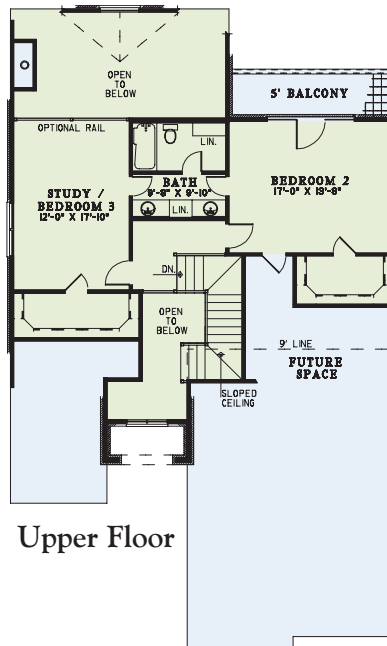


The unique exterior of this **Nelson Design Group** home only adds to its charm. You'll love entertaining in the **Great Room with fireplace** and access to the **Patio** at the rear. This **Kitchen** was created with convenience in mind with its **walk-in Pantry**, eat-at bar with seating, and easy access to the **Breakfast Room**. The private **Master Suite** completes the **Main Floor**. While upstairs, enjoy the view of the **Great Room** below from the **Study/Bedroom 3**, or step onto the **private Balcony** accessed from **Bedroom 2** for some fresh air. Both **Upper Floor Bedrooms** feature large walk-in closets as well as a shared **full Bath**, perfect for the kids.

Floor Plan Specifications

Width: 40' 0"
 Depth: 70' 0"
 Main Floor: 1,646 sq. ft.
 Upper Floor: 764 sq. ft.
 Total Living: 2,410 sq. ft.
 Main Ceiling: 9 ft.
 Upper Ceiling: 9 ft.

- Courtyard to entry Porch
- Great Room with Fireplace and Patio access is open to above
- Kitchen with island cooktop, eat-at bar with seating, and walk-in Pantry
- Master Suite with bay window and private Bath with double vanities, walk-in closet, and whirlpool tub
- Study/Bedroom 3 with walk-in closet overlooks Great Room
- Bedroom 2 with walk-in closet, private Balcony, and access to shared full Bath



Amber-Di' Lane Homes, Inc.
 903-887-4228

Designed by
Nelson Design Group
 RESIDENTIAL PLANNERS - DESIGNERS
 ©Nelson Design Group, LLC
 www.nelsondesigngroup.com
 800.590.2423