

# NDG 545



Beautiful stone and siding give warmth to this French Country design. Elegance is achieved in our **Nelson Design Group** home by using boxed columns and ten-foot ceilings. The Foyer and Dining Room are **lined with columns** and adjoin the Great Room. The Kitchen and Breakfast Room are **great for entertaining** and offer easy access to the Optional Grilling Porch. This split bedroom plan has a Master Suite with a large walk-in closet, whirlpool tub and separate shower. A **Bonus Room** above the Garage is available with stair access near the Master Suite. Two Bedrooms and a **large Bathroom** are located on the other side of the Great Room, giving privacy to the entire family.

## Floor Plan Specifications

Width: 52' 0"

Depth: 69' 6"

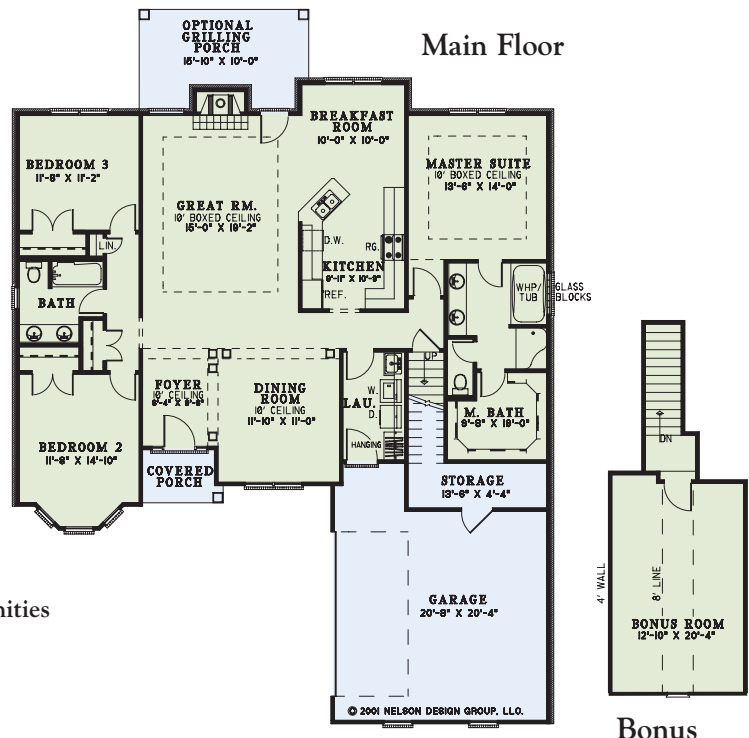
Total Living: 1,869 sq. ft.\*

\*Bonus: 288 sq. ft.

Main Ceiling: 9 ft.

Upper Ceiling: 8 ft.

- Covered Front Porch opens to Foyer
- Dining Room with 8 in. boxed columns
- Great Room has fireplace and access to Optional Grilling Porch
- Kitchen with easy access to the Breakfast and Dining Rooms
- Master Suite with optional 10 ft. boxed ceiling
- Master Bath with double vanities, whirlpool tub, and walk-in closet
- Bedroom 2 with bay window
- Bedrooms 2 and 3 share full Bath with double vanities



*Amber-Di' Lane Homes Inc.*  
**903-887-4228**

Designed by  
**Nelson Design Group**  
RESIDENTIAL PLANNERS - DESIGNERS  
©Nelson Design Group, LLC  
www.nelsondesigngroup.com  
800.590.2423

Note: Rendering is artist's interpretation of this home and does not necessarily represent floor plans. Please refer to actual floor plans for more details.

# NDG 761

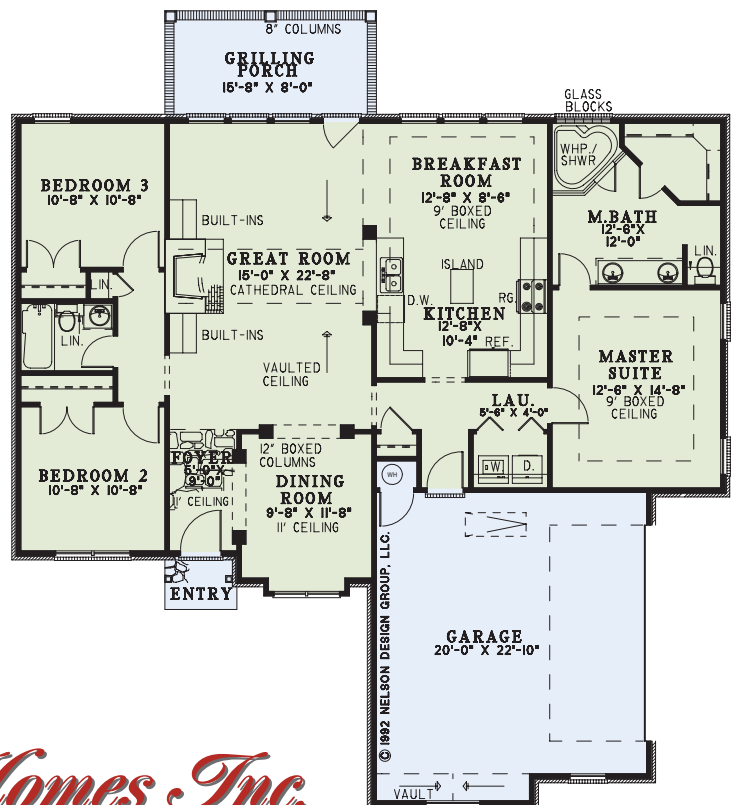


Let the fireplace and cozy atmosphere of this **Nelson Design Group** home beckon you inside on cold winter days. Make your way through the Foyer and into the Great Room, where the **fireplace surrounded by built-ins** will warm you up as you relax. A **center island** is just one of the luxuries you'll enjoy in this stylish Kitchen, steps away from the Breakfast Room. This split bedroom design offers privacy for all family members. The Master Suite features a boxed ceiling and lavish bath, tucked quietly away from the **two additional Bedrooms**.

## Floor Plan Specifications

Width: 52' 6"  
Depth: 58' 10"  
Total Living: 1,600 sq. ft.  
Main Ceiling: 8 ft.

- Covered Entry with 6 in. columns
- Foyer with 11 ft. ceiling
- Dining Room with 11 ft. ceiling and 12 in. boxed columns framing entries
- Great Room with vaulted ceiling to Cathedral Ceiling, built-ins, fireplace, and access to Grilling Porch
- Kitchen with 9 ft. boxed ceiling and island work station opens to Breakfast Room
- Master Suite with 9 ft. boxed ceiling
- Bedrooms 2 and 3 share a full bath



*Amber-Di' Lane Homes Inc.*  
**903-887-4228**

Designed by  
**Nelson Design Group**  
RESIDENTIAL PLANNERS - DESIGNERS  
©Nelson Design Group, LLC  
www.nelsondesigngroup.com  
800.590.2423

Note: Rendering is artist's interpretation of this home and does not necessarily represent floor plans. Please refer to actual floor plans for more details.



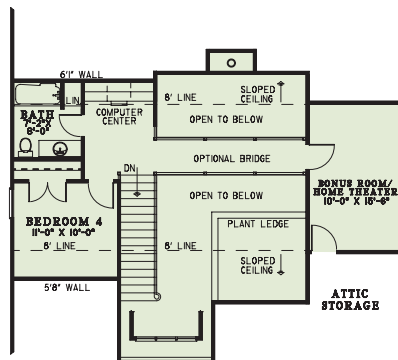
# NDG 1090



Stone and cedar create a unique exterior featured on this **Nelson Design Group** home. The Great Room and Dining Room merge with columns in between, and are just steps away from the **convenient Kitchen**. This plan design offers the best for everyone - privacy for all family members as well as **ample space**. Upstairs, find another Bedroom, Bathroom, and a **built-in Computer Center**, as well as the option of a Bonus Room/Home Theater to enjoy with your family for years to come.

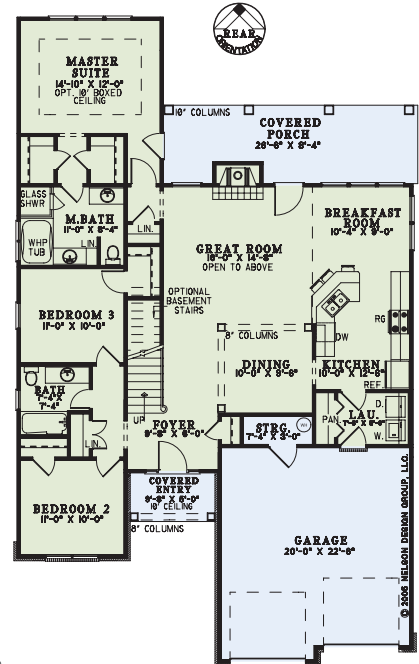
## Floor Plan Specifications

Width: 42' 0"  
Depth: 68' 6"  
Main Floor: 1,588 sq. ft.  
Upper Floor: 287 sq. ft.  
Total Living: 1,875 sq. ft.\*  
\*Bonus: 233 sq. ft.  
Main Ceiling: 9 ft.  
Upper Ceiling: 8 ft.



Upper Floor

Main Floor



- 8 in. columns on Covered Entry
- Foyer open to above
- 8 in. boxed columns surround Dining Room
- Great Room with fireplace and access to rear Covered Porch opens to Upper Floor
- Rear Covered Porch with 10 in. boxed columns
- Kitchen opens to Breakfast Room with snack bar
- Master Suite with optional 10 ft. boxed ceiling and two walk-in closets
- Master Bath with whirlpool tub, glass shower, and split vanities
- Computer Center
- Optional Bridge and Bonus Room/Home Theater

*Amber-Di' Lane Homes Inc.*  
**903-887-4228**

Designed by  
**Nelson Design Group**  
RESIDENTIAL PLANNERS - DESIGNERS  
©Nelson Design Group, LLC  
www.nelsondesigngroup.com  
800.590.2423

Note: Rendering is artist's interpretation of this home and does not necessarily represent floor plans. Please refer to actual floor plans for more details.

# NDG 1133



Each time I see a home *built of stone*, I think of castles. And like most young girls I longed to live in a castle on a hill. This design reminds me of the summer I met an Italian boy named Antonio who lived with his family in an Italian country home they called *La Rocca – “the fortress”*. The same colors of stone are reflected in this design....bringing back wonderful youthful memories.

## Floor Plan Specifications

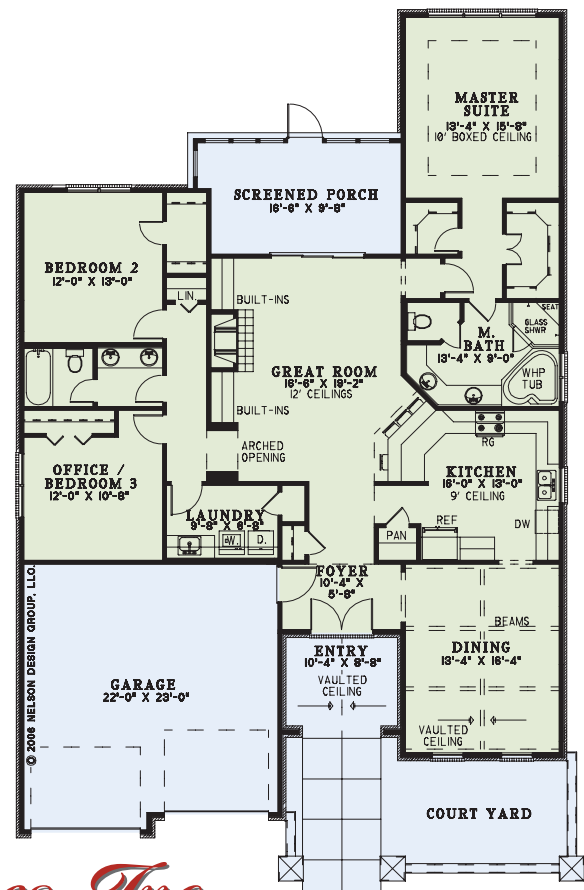
Width: 47' 0"

Depth: 75' 0"

Total Living: 1,943 sq. ft.

Main Ceiling: 9 ft.

- Court Yard
- Covered Entry with vaulted ceiling
- Dining Room with vaulted ceiling and exposed beams
- Kitchen with 9 ft. ceiling and snack bar to Great Room
- Great Room with 12 ft. ceilings, fireplace, built-ins, and access to Screened Porch
- Master Suite with 10 ft. boxed ceiling and two walk-in closets
- Master Bath with corner whirlpool tub, glass shower and two vanities
- Bedroom 2 with walk-in closet
- Office/Bedroom 3
- Laundry with sink



*Amber-Di' Lane Homes Inc.*  
**903-887-4228**

Designed by  
**Nelson Design Group**  
RESIDENTIAL PLANNERS - DESIGNERS  
 ©Nelson Design Group, LLC  
 www.nelsondesigngroup.com  
 800.590.2423

Note: Rendering is artist's interpretation of this home and does not necessarily represent floor plans. Please refer to actual floor plans for more details.