

NDG 552

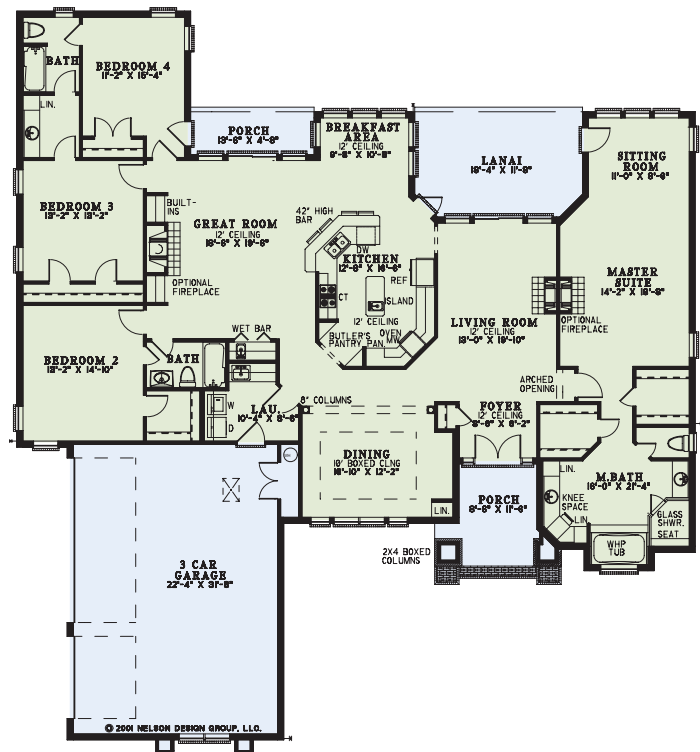


This sprawling four-bedroom plan from **Nelson Design Group** centers on an ultra-functional Kitchen accessing all living areas with ease. A **handy eat-at bar** and island help make this Kitchen any gourmet's dream. Separate Living and Great Rooms each flaunt gas fireplaces and lots of open space. All three secondary Bedrooms feature private Bath entrances. The **exquisite Master Suite** presents a **radiant fireplace**, large Sitting Room, private entrance to the Lanai and a massive Bath that includes two walk-in closets and an **oversized whirlpool tub**.

Floor Plan Specifications

Width: 74' 2"
 Depth: 81' 2"
 Total Living: 3,021 sq. ft.
 Main Ceiling: 9' 4"

- Front Porch opens to Foyer
- Living Room with 12 ft. ceiling, fireplace and access to Lanai
- Dining Room with 8 in. columns and 10 ft. boxed ceiling
- Kitchen with island, eat-at snack bar and butler's pantry
- Breakfast Area with rear view
- Great Room with wet bar, optional fireplace, built-in shelves and access to Rear Porch
- Master Suite with optional fireplace and Sitting Room that accesses Lanai
- Master Bath with two walk-in closets, glass shower with seat, whirlpool tub and separate vanities
- Bedrooms 3 and 4 share access to full Bath
- Bedroom 4 with private access to Rear Porch



Amber-Di'Lane Homes, Inc.
903-887-4228

Designed by
Nelson Design Group
 RESIDENTIAL PLANNERS - DESIGNERS
 ©Nelson Design Group, LLC
 www.nelsondesigngroup.com
 800.590.2423

Note: Rendering is artist's interpretation of this home and does not necessarily represent floor plans. Please refer to actual floor plans for more details.