

NDG 563



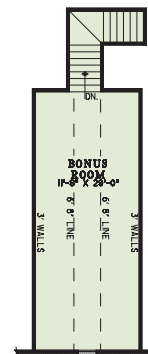
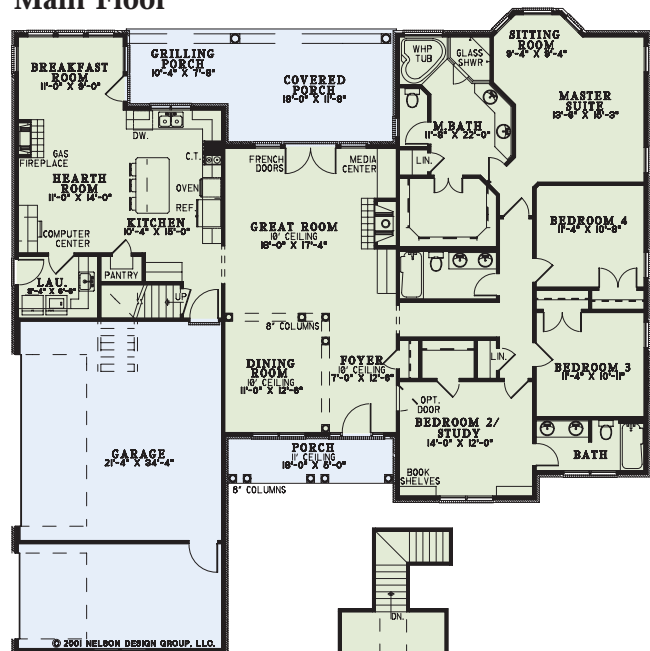
Tradition begins in this **Nelson Design Group** home. As you enter through the Foyer, you'll notice the **elegant columns** that define the Dining Room - perfect for dinner parties. Your Great Room, complete with **Media Center** and **fireplace**, has beautiful French door access to the Rear Covered Porch for entertaining guests during the warm seasons. A cozy Hearth Room will become the favorite gathering room for the family with a **Computer Center** nearby. Upstairs, you'll discover a **Bonus Room** that can be converted into a playroom for the kids when company drops by.

Main Floor

Floor Plan Specifications

Width: 66' 4"
 Depth: 67' 2"
 Total Living: 2,405 sq. ft.*
 *Bonus: 358 sq. ft.
 Main Ceiling: 9 ft.
 Bonus Ceiling: 8 ft.

- Covered Front Porch opens to Foyer with 10 ft. ceiling
- Formal Dining Room with 8 in. round columns
- Great Room with fireplace, Media Center and French door access to Rear Covered Porch
- Kitchen with walk-in Pantry and island snack bar
- Breakfast Room with access to Rear Grilling Porch
- Hearth Room with Computer Center and fireplace
- Master Suite with Sitting Room
- Master Bath with large walk-in closet, double vanities, corner whirlpool tub and corner glass shower
- Upper Floor Bonus Room



Bonus Room

Amber-Di'Lane Homes, Inc.
903-887-4228

Designed by
Nelson Design Group
 RESIDENTIAL PLANNERS - DESIGNERS
 ©Nelson Design Group, LLC
 www.nelsondesigngroup.com
 800.590.2423

Note: Rendering is artist's interpretation of this home and does not necessarily represent floor plans. Please refer to actual floor plans for more details.