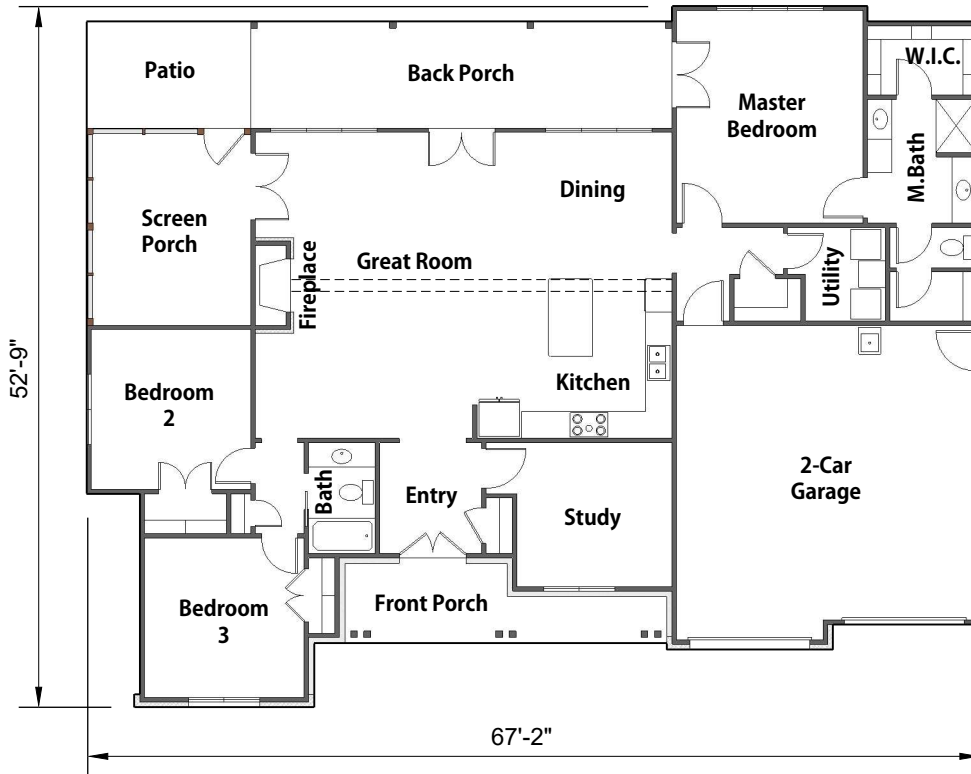


# PINYON

1960 SF Home - 3 Bedrooms - 2 Bathrooms - Study - Screen Porch  
 2-Car Garage - Open Floor Plan - Large Front & Back Porches - Fireplace



Floor Plan



Front View

TOTAL LIVING AREA:	1960 SF
PORCHES:	383 SF
SCREEN PORCH:	183 SF
GARAGE:	538 SF
<b>TOTAL UNDER ROOF:</b>	<b>3064 SF</b>



Back View



[amberdilanehomes.com](http://amberdilanehomes.com)

903-887-4228